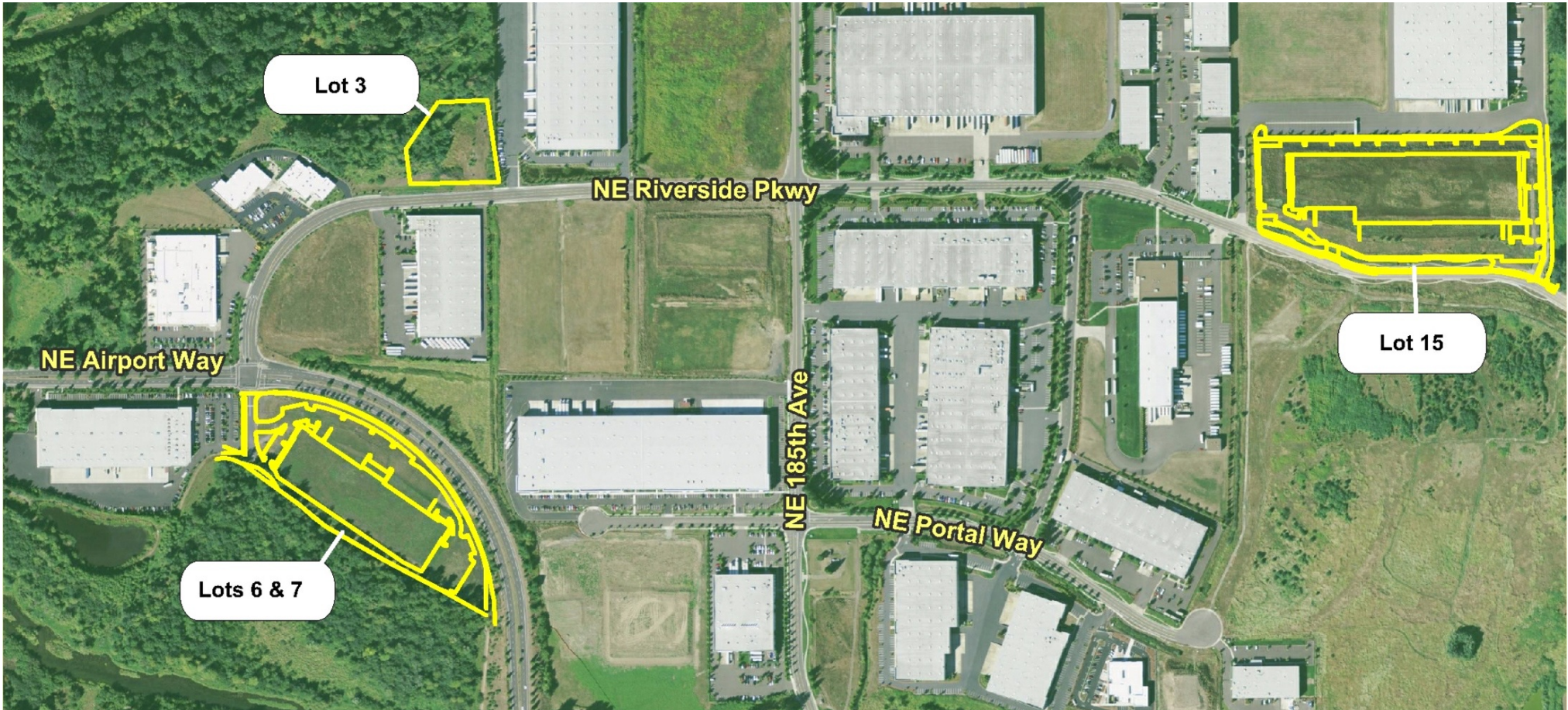


# Prologis PDX

NE Riverside Parkway  
Portland, Oregon 97230



## Description

---

3.96 gross acres with approximately 1.92 usable acres  
(outside the e-zone)

City of Portland, zoned IG-2 (general industrial)

Site will accommodate concrete tilt-up building of approximately 25,505 SF

All utilities to site

Excellent site for trailer storage

